

**genuity**®

## CORN TRAITS

# Corn Disease Calendar

### SCOUTING FOR CORN DISEASES

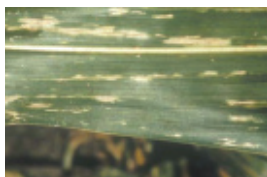
| STAGE 1<br>EMERGENCE TO KNEE HIGH   | STAGE 2<br>KNEE HIGH TO TASSELING  | STAGE 3<br>TASSELING TO MATURITY   |
|---|--|--|
| Seedling Blights*   |  |  |
| Anthracnose Leaf Blight, Bacterial Wilt and Bacterial Leaf Blight (Stewart's Wilt, Stewart's Disease), Goss's Wilt, Physoderma Brown Spot, Common Smut, High Plains Virus |  |  |
|   | Northern Leaf Blight, Southern Leaf Blight, Common Rust, Southern Rust, Crazy Top, Sorghum Downy Mildew*, Anthracnose Top Dieback & Stalk Rot, Bacterial Stalk Rot*, Pythium Stalk Rot*, Maize Chlorotic Dwarf Virus, Maize Dwarf Mosaic Virus, Corn Lethal Necrosis |  |
|   |  | All Ear & Kernel Rots  |
|   |  | Gray Leaf Spot, Head Smut*, Charcoal Rot, Diplodia Stalk Rot, Fusarium Stalk Rot, Gibberella Stalk Rot, Red Root Rot |

\*Image unavailable

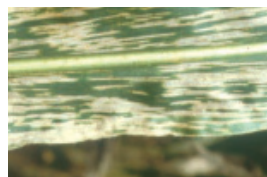
### LEAF DISEASES



Anthracnose Leaf Blight  
(Stages I, III)



Stewart's Bacterial Leaf Blight  
(Stages I, III)



Gray Leaf Spot  
(Stage III)



Eyespot  
(Stages I, III)



Southern Corn Leaf Blight  
(Stages II, III)



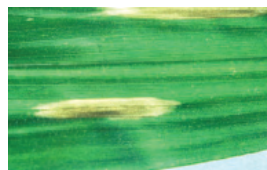
Goss's Wilt (Stages I, III)



Southern Rust (surface)  
(Stages II, III)



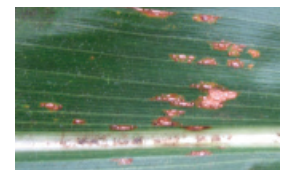
Southern Rust (back) (Stages II, III)



Northern Corn Leaf Blight  
(Stages II, III)



Physoderma Brown Spot  
(Stages I, III)



Common Rust  
(Stages II, III)

## SMUTTING/VIRUS/FUNGAL SYSTEMIC DISEASES



Common Corn Smut  
(Stages I, II, III)



High Plains Virus  
(Stages I, II, III)



Corn Lethal Necrosis  
(Stages II, III)



Maize Chlorotic Dwarf Virus  
(Stages II, III)



Maize Dwarf Mosaic Virus  
(Stages II, III)



Crazy Top  
(Stages II, III)

## EAR ROTS



Diplodia Ear Rot  
(Stage III)



Fusarium Ear Rot  
(Stage III)

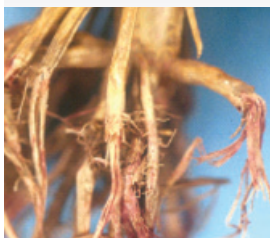


Aspergillus  
Ear Rot  
(Stage III)



Gibberella Ear Rot  
(Stage III)

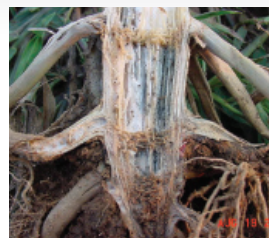
## STALK AND ROOT ROTS



Red Root Rot  
(Stage III)



Anthracnose Stalk Rot  
(Stages II, III)



Charcoal Rot  
(Stage III)



Gibberella Stalk Rot  
(Stage III)



Fusarium Stalk Rot  
(Stage III)  
(infected stalk right)



Diplodia Stalk Rot  
(Stage III)