

# Genuity® Roundup Ready 2 Yield® Early Season Trait Talk



## Soybean Seedling Diseases

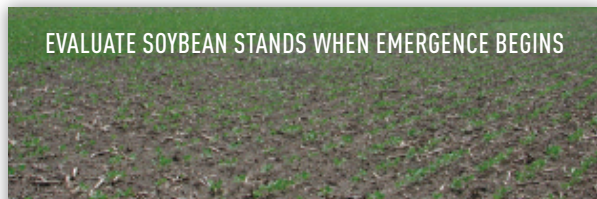
Wet, poorly drained soils and air temperatures below 68° F can be typical during spring planting and crop emergence. These characteristics favor development of the fungal pathogens that cause soybean seedling diseases as well as slow germination and plant growth. An Agronomic Spotlight has been developed to help you scout for these diseases after planting.

Acceleron™ seed treatment contains a proprietary fungicide combination of metalaxyl and pyraclostrobin to help protect Genuity® Roundup Ready 2 Yield® soybeans from early season diseases like Phytophthora, Fusarium, Rhizoctonia and Pythium.

## Assessing Soybean Stands

As soybeans emerge, evaluating the stand is important to identify problems from planting, insects or disease. Evaluating your stands early can help you identify concerns while there may be time to remedy them. Learn three common methods for assessing stand counts in this Agronomic Spotlight.

Stand loss due to early season seedling diseases and insect pests can be minimized by using Acceleron™ Seed Treatment products. Acceleron™ seed treatment contains a proprietary fungicide combination, an insecticide and plant health component to help protect Genuity® Roundup Ready 2 Yield® soybean seedlings from these pests and promote early season vigor and growth.



EVALUATE SOYBEAN STANDS WHEN EMERGENCE BEGINS

## Weed Management is Critical

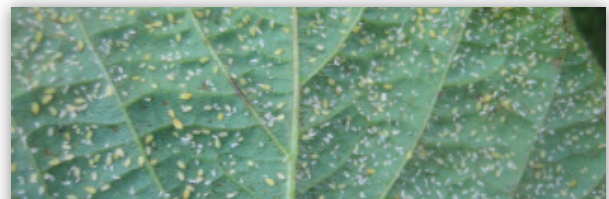
Early and mid-season weed control can protect maximum soybean yield potential. Uncontrolled weeds not only reduce soybean yields through their competition for nutrients, moisture and sunlight, but they can also impact harvest efficiency. Use the Soybean Weed Calendar to help you identify important weeds.

Genuity® Roundup Ready 2 Yield® soybeans offer the same flexible weed control, dependable crop safety as Roundup Ready® soybeans with the added benefit of increased yield potential.

## Managing Soybean Insects

Soybean aphids are small, soft-bodied, pear-shaped insects. They can transmit Soybean Mosaic Virus and excessive feeding can cause soybean flowers and small pods to abort. Bean leaf beetle is a vector for Bean Pod Mottle Virus and can cause injury by feeding on leaves and pods. Refer to the Agronomic Spotlight to receive scouting and management tips for aphids. The Soybean Insect Calendar will help you identify insects throughout the season.

Acceleron™ seed treatment contains imidicloprid insecticide to help protect Genuity® Roundup Ready 2 Yield® soybeans from damage by early season insect pests like soybean aphids, bean leaf beetles, wireworms and grubs.



For complete Agronomic Spotlight details, please visit [www.genuity.com/soybean.aspx](http://www.genuity.com/soybean.aspx)

Monsanto Company is a member of Excellence Through Stewardship® (ETS). Monsanto products are commercialized in accordance with ETS Product Launch Stewardship Guidance, and in compliance with Monsanto's Policy for Commercialization of Biotechnology-Derived Plant Products in Commodity Crops. This product has been approved for import into key export markets with functioning regulatory systems. Any crop or material produced from this product can only be exported to, or used, processed or sold in countries where all necessary regulatory approvals have been granted. It is a violation of national and international law to move material containing biotech traits across boundaries into nations where import is not permitted. Growers should talk to their grain handler or product purchaser to confirm their buying position for this product. Excellence Through Stewardship® is a registered trademark of Biotechnology Industry Organization.

ALWAYS READ AND FOLLOW PESTICIDE LABEL DIRECTIONS. Roundup Ready® crops contain genes that confer tolerance to glyphosate, the active ingredient in Roundup® brand agricultural herbicides. Roundup® brand agricultural herbicides will kill crops that are not tolerant to glyphosate. Acceleron™, Genuity and Design™, Genuity Icons, Roundup®, Roundup Ready®, and Roundup Ready 2 Yield® are trademarks of Monsanto Technology LLC. All other trademarks are the property of their respective owners. ©2010 Monsanto Company.

