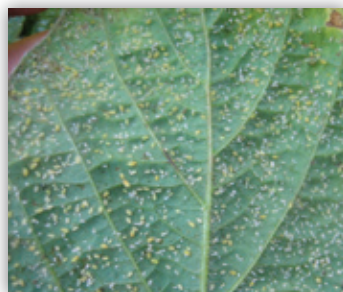




Genuity® Roundup Ready 2 Yield® Late Season and Harvest Trait Talk

Aphid Management

In the last decade, soybean aphids (SBA) have become a major pest in soybean fields throughout the United States. When left untreated, SBA



Soybean Aphid

Genuity® Roundup Ready 2 Yield® aphid-tolerant soybean varieties in 2011 will help growers manage these insect pests.

can infest plants in high numbers and damage an entire soybean field leaving behind stunted, curled plants while potentially transmitting harmful viral diseases. It is never too early in the year to begin planning SBA management, and the introduction of new

Interpreting Yield Results—Data Variability

Even the most superior products do not win every plot. When looking over plot data, one may ask why the product with the best average yield across multiple locations, does not have the highest yield at every location, or possibly why its average ranking across multiple locations changes as the harvest season progresses.

Managing White Mold in Soybeans

Sclerotinia stem rot, or white mold, is a disease that can impact high yield potential soybeans and thrives under moist conditions and below average temperatures. The occurrence of white mold



White Mold (Sclerotinia stem rot)

depends on many factors. Management practices can be implemented to help reduce the risk of white mold in the future.

Soybean Plant Health and Foliar Fungicides

Growers are considering the use of foliar fungicides more frequently in soybean management. Higher commodity prices allows greater use of yield enhancing and protecting inputs. New claims of “plant health” effects have expanded the use of strobilurin fungicides. These effects include longer green leaf retention, increased water efficiency, and increased stress tolerance during flowering and pod fill.

For complete Agronomic Spotlight details and to learn more about interpreting yield results, please visit www.genuity.com/soybean.aspx

Monsanto Company is a member of Excellence Through Stewardship® (ETS). Monsanto products are commercialized in accordance with ETS Product Launch Stewardship Guidance, and in compliance with Monsanto's Policy for Commercialization of Biotechnology-Derived Plant Products in Commodity Crops. This product has been approved for import into key export markets with functioning regulatory systems. Any crop or material produced from this product can only be exported to, or used, processed or sold in countries where all necessary regulatory approvals have been granted. It is a violation of national and international law to move material containing biotech traits across boundaries into nations where import is not permitted. Growers should talk to their grain handler or product purchaser to confirm their buying position for this product. Excellence Through Stewardship® is a registered trademark of Biotechnology Industry Organization.

ALWAYS READ AND FOLLOW PESTICIDE LABEL DIRECTIONS. Roundup Ready® crops contain genes that confer tolerance to glyphosate, the active ingredient in Roundup® brand agricultural herbicides. Roundup® brand agricultural herbicides will kill crops that are not tolerant to glyphosate. Genuity®, Genuity and Design®, Genuity Icons, Roundup®, Roundup Ready®, and Roundup Ready 2 Yield® are trademarks of Monsanto Technology LLC. All other trademarks are the property of their respective owners. ©2010 Monsanto Company. [22413Agpd]

